

Diabetic Macular Edema

Physician: Dr. Daniel Lavinsky | Porto Alegre, Rio Grande do Sul, Brazil

Patient: 54 years old, Severe non-proliferative diabetic retinopathy with macular edema

Treatment Parameters:

Laser System: PASCAL Streamline (577nm)

Wavelength: 577 nm

Power: 110mW for titrated burn (100%)

Exposure: 15 ms

Spot Size: 200 μ m

Spacing: 0.25 spot diameter

Lens: Area Centralis lens

Endpoint Management: On

EM Setting: 30%

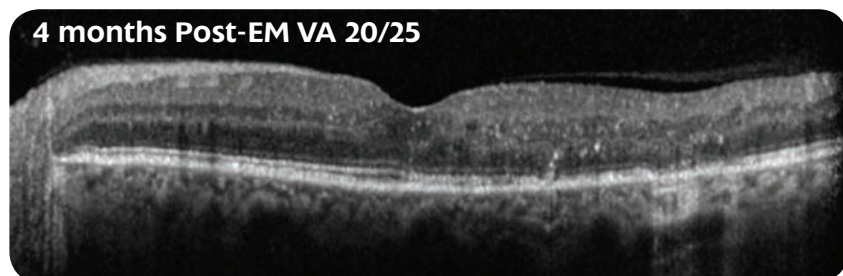
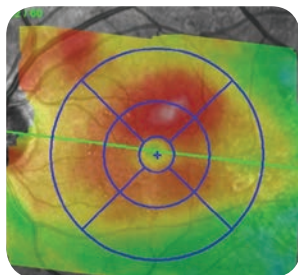
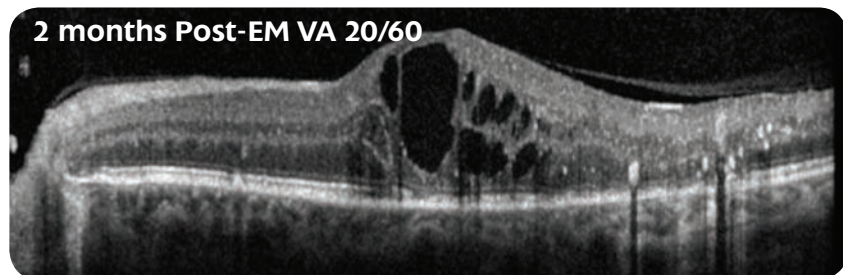
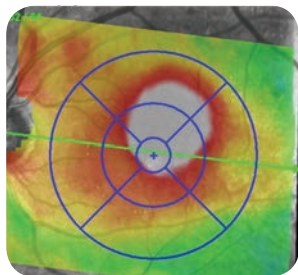
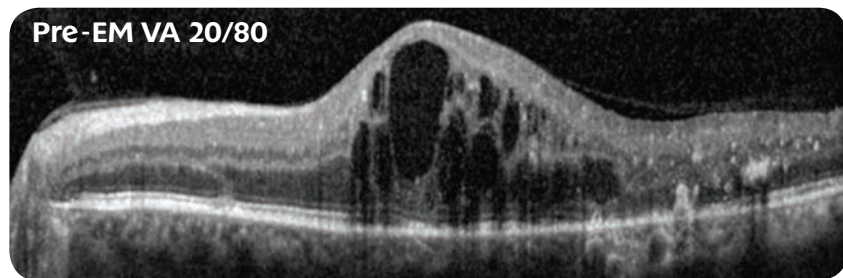
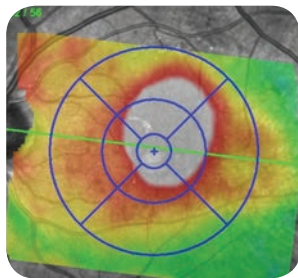
Pattern Selection: 4 x 4, 2 x 2, Macular Grid

Landmark: On (Macula Grid); Off (4x4 & 2x2)

Total spots: 768 burns

Treatment Time: 3 Minutes

Treatment Area: See page 2

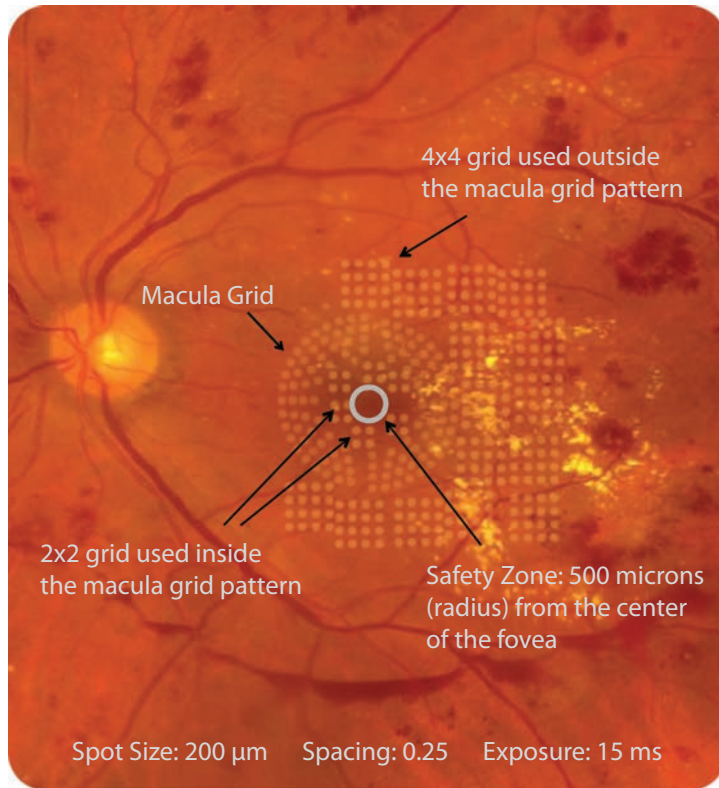


Techniques and Tips:

When treating inside the macula, Dr. Lavinsky uses the 2 x 2 grid and treats within 500 micron radius from the center of the fovea. He usually titrates to apply a slightly more intense burn and then decreases by 10-20 mW to get a 100% barely visible burn, waiting 3 seconds before defining the lesion.

EM Treatment Area and Pattern Selection:

Image is not actual patient



The patterns on this fundus photo are shown to give the physician a visual reference of where the treatment was done. During actual Endpoint Management treatment, it is a physician's preference whether the burns are barely visible or completely invisible, with the exception of Landmark™ Patterns turned on.

Patient case, parameters and techniques provided by the physician/author.

Topcon Medical Laser Systems assumes no responsibility for patient outcome or for physician oversight.



Endpoint Management is an optional upgrade on PASCAL Streamline and Synthesis lasers.

HEADQUARTERS

TOPCON MEDICAL LASER SYSTEMS, INC.

3130 Coronado Drive
Santa Clara, CA 95054 USA

Phone: +1 408.235.8200
Toll Free (USA only): 1.888.760.8657
Fax: +1 408.235.8259
Website: www.tmlsinc.com

© TOPCON MEDICAL LASER SYSTEMS, INC. • PASCAL is a registered trademark and Synthesis, Streamline, Landmark and Endpoint Management are trademarks of TOPCON MEDICAL LASER SYSTEMS, INC.

