

# Enhanced Auto Kerato- Refractometer with Corneal mapping

## Topcon KR-800PA Auto Kerato-Refractometer

new

- | Corneal mapping function
- | Topcon's rotary prism technology  
for unparalleled accuracy
- | Easy operation with 3D auto alignment
- | Wide touch screen control monitor
- | Simple and intuitive data display
- | Compact design



 **TOPCON**

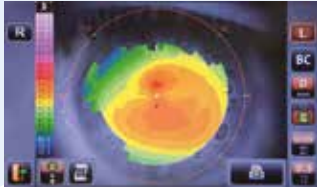
YOUR VISION. OUR FOCUS.

[www.topcon-medical.eu](http://www.topcon-medical.eu)

# Enhanced Auto Kerato-Refractometer with Corneal mapping

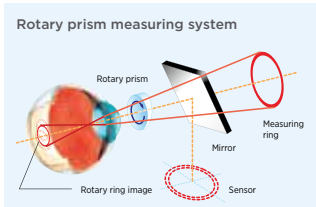
## KR-800PA

Auto Kerato-Refractometer



### Corneal mapping

The corneal mapping function provides a patient's corneal curvature radius and refraction power map. By performing corneal mapping in conjunction with the refraction measurement, it is possible to observe abnormal corneal shape with total refraction.



### Unparalleled accuracy

The unique\* Rotary prism technology, exclusive to Topcon, allows for unparalleled precision and reliability. This system measures a wider area of the retina while permitting measurements through pupils as small as 2 mm in diameter. \*The off-centered ring target can cover areas that may be occluded by a small pupil. The angle of the prism enables a wider area of the retina to be measured.

### Easy operated 3D auto alignment function

The 3D auto alignment feature supports ease of use by maintaining XYZ alignment even during small eye movements, providing fast and precise alignment. An operator follows the alignment guidance on the monitor for initial alignment, then 3D auto alignment and measurement start automatically.

**IMPORTANT** Subject to change in design and/or specifications without advanced notice. In order to obtain the best results with this instrument, please be sure to review all user instructions prior to operation. Medical device Class Im. Manufacturer: Topcon Corporation.



#### Topcon Europe Medical B.V.

Essebaan 11; 2908 LJ Capelle a/d IJssel; P.O. Box 145; 2900 AC Capelle a/d IJssel; The Netherlands;  
Phone: +31-(0)10-4585077; Fax: +31-(0)10-4585045; E-mail: medical@topcon.eu; www.topcon-medical.eu

#### Topcon Danmark

Præstemarksvej 25; 4000 Roskilde; Denmark; Phone: +45-46-327500; Fax: +45-46-327555;  
E-mail: info@topcon.dk; www.topcon.dk

#### Topcon Scandinavia A.B.

Neogatan 2; P.O. Box 25; 43151 Mölndal; Sweden; Phone: +46-(0)31-7109200; Fax: +46-(0)31-7109249;  
E-mail: medical@topcon.se; www.topcon.se

#### Topcon España S.A.

HEAD OFFICE: Frederic Mompou, 4; 08960 Sant Just Desvern; Barcelona, Spain; Phone: +34-93-4734057;  
Fax: +34-93-4733932; E-mail: medical@topcon.es; www.topcon.es

#### Topcon Italy

Viale dell'Industria 60; 20037 Paderno Dugnano, (MI) Italy; Phone: +39-02-9186671;  
Fax: +39-02-91810191; E-mail: info@topcon.it; www.topcon.it

#### Topcon France Medical S.A.S.

BAT A1; 3 Route de la Révolte, 93206 Saint Denis Cedex; Phone: +33-(0)1-49212323; Fax: +33-(0)1-49212324;  
E-mail: topcon@topcon.fr; www.topcon-medical.fr

#### Topcon Deutschland GmbH

Hanns-Martin-Schleyer Strasse 41; D-47877 Willich, Germany; Phone: (+49) 2154-885-0;  
Fax: (+49) 2154-885-177; E-mail: info@topcon-medical.de; www.topcon-medical.de

#### Topcon Polska Sp. z o.o.

ul. Warszawska 23; 42-470 Siewierz, Poland; Phone: +48-(0)32-670-50-45; Fax: +48-(0)32-671-34-05;  
www.topcon-polska.pl

#### Topcon Great Britain Ltd.

Topcon House; Kennet Side; Bone Lane; Newbury; Berkshire RG14 5PX; United Kingdom;  
Phone: +44-(0)1635-551120; Fax: +44-(0)1635-551170; E-mail: medical@topcon.co.uk; www.topcon.co.uk

#### Topcon Ireland

Unit 276, Blanchardstown; Corporate Park 2; Ballycoolin; Dublin 15, Ireland; Phone: +353-18975900;  
Fax: +353-18293915; E-mail: medical@topcon.ie; www.topcon.ie



#### TOPCON CORPORATION

75-1 Hasunuma-cho, Itabashi-ku, Tokyo 174-8580, Japan.  
Phone: 3-3558-2523/2522, Fax: 3-3960-4214, www.topcon.co.jp